



Operator (Report): ZetaView
Video Operator: ZetaView

Sample Parameters

Sample Name: ExoSpin Isolated Exosomes
Comment: SN215, CA0032, cell0127, offset=-3, T=no, Sens85, Sh70, MinB20, MinS5, MaxS200
Electrolyte: PBS, Concentration: 0.000 N
Temperature: 27.09 °C sensed
pH 7.0 entered
Conductivity: 12092.05 µS/cm sensed

Result (sizes in nm)

	Number	Concentration	Volume
Median (X50)	79.0	79.0	109.4
Span	32.6	32.6	41.4
Concentration:	5.1E+7 Particles / mL		
Dilution Factor:	700		
Original Concentration:	3.5E+10 Particles / cm ³		

Measurement Parameters

Cell S/N: CA0032-0141b

Quality

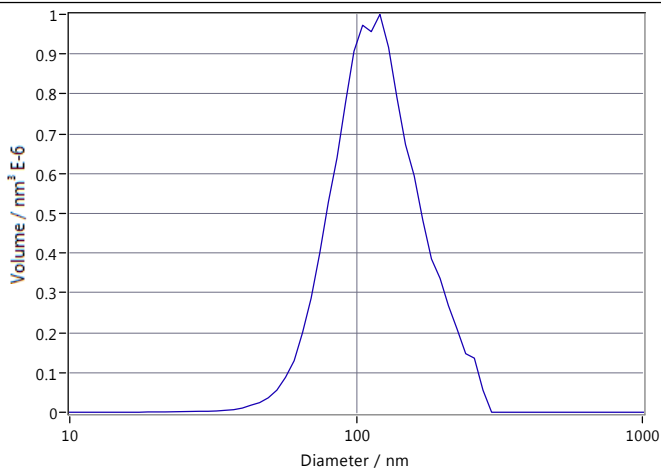
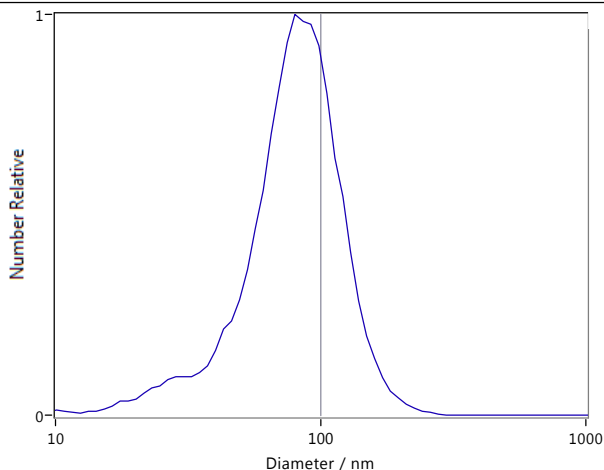
Average Counted Particles per Frame: 170
Number of Traced Particles: 1024

Measurement Mode: Size Distribution 2 Cycles

11 Positions, 3 Removed for Analysis

Analysis Parameters

Max Size: 1000, Min Size: 10, Min Brightness: 20



Peak Analysis (Number Absolute)

Diameter / nm	Number Absolute	FWHM / nm	Percentage
85.1	78.0	65.8	100.0

X Values

	Number	Concentration	Volume
X10	42.5	42.5	73.3
X50	79.0	79.0	109.4
X90	118.6	118.6	173.7
Span	1.0	1.0	0.9
Mean	83.4	83.4	121.1
StdDev	32.6	32.6	41.4



Comment

(Signature)