

GFH59AF Recombinant Human CNTF (Animal-Free)

Description

Ciliary Neurotrophic Factor (CNTF) is a neurotrophic factor that promotes the survival of neuronal cell populations, neurite outgrowth, and neurotransmitter synthesis. CNTF also plays an important protective role during nervous system injury.

This product is produced with no animal derived raw products. All processing and handling employs animal free equipment and animal free protocols.

| | |
|-------------------------|---|
| Length | 200 aa |
| Molecular Weight | 22.9 kDa |
| Source | E. coli |
| Accession Number | P26441 |
| Purity | ≥95% determined by reducing and non-reducing SDS-PAGE |

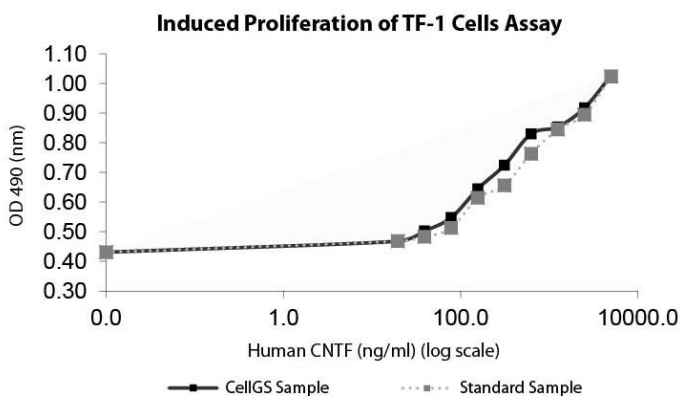
Specifications

| | |
|----------------------------|--|
| Alternative Names | Ciliary Neurotrophic Factor |
| Biological Activity | Human CNTF (Animal-Free) is fully biologically active when compared to standard. The activity is determined by the induced proliferation of TF-1 cells and it is typically less than 325 ng/ml. This corresponds to an expected specific activity of 3.1×10^3 units/mg. |
| Endotoxin Level | ≤1.00 EU/μg as measured by kinetic LAL |
| Formulation | Lyophilized from a sterile (0.2 micron) filtered aqueous solution containing 10 mM sodium phosphate, pH 7.5 |
| AA Sequence | MAFTEHSPLT PRRDLCSRS IWLARKIRSD LTALTESYVK HQGLNKNINL DSADGMPVAS TDQWSELTEA ERLQENLQAY RTFHVLLARL LEDQQVHFTP TEGDFHQAIH TLLLQVAAFA YQIEELMILL EYKIPRNEAD GMPINVDGGS LFEKKLWGLK VLQELSQWTV RSIHDLRFIS SHQTGIPARG SHYIANNKKM |

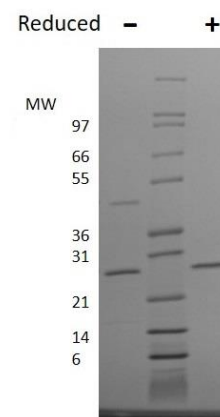
Preparation and Storage

| | |
|------------------------------|--|
| Reconstitution | Centrifuge vial before opening. When reconstituting the product, gently pipet and wash down the sides of the vial to ensure full recovery of the protein into solution. It is recommended to reconstitute the lyophilized product with sterile water at 0.1 mg/ml, which can be further diluted into other aqueous solutions. If a precipitate is observed, centrifuge the solution thoroughly and use only the soluble fraction (removing it from the precipitate). A 10% overfill has been added to compensate for any loss of protein in the precipitate. |
| Stability and Storage | 12 months from date of receipt when stored at -20°C to -80°C as supplied. 1 month when stored at 4°C after reconstituting as directed. 3 months when stored at -20°C to -80°C after reconstituting as directed. |

Data



Induced proliferation of TF-1 cells assay for Human CNTF (Animal-Free). Cell proliferation was measured to calculate the ED50, which is as expected around 250 ng/ml.



Non-reducing (-) and reducing (+) conditions in a 4 - 20% Tris-Glycine gel stained with Coomassie Blue. 1 μg of protein was loaded in each lane. Human CNTF has a predicted Mw of 22.9 kDa.