

GFH162 Recombinant Human IL-27 / EBI-3

Description

Epstein-Barr virus induced gene-3 (EBI-3), is a secreted glycoprotein belonging to the hematopoietin receptor family related to the p40 subunit of interleukin-12 (IL-12). EBI-3 expression is induced in B-lymphocytes in response to Epstein-Barr virus infection. EBI-3 forms heterodimers with p28 to form interleukin-27 (IL-27), and with p35 to form interleukin-35 (IL-35). Both IL-27 and IL-35 have anti-inflammatory and regulatory activity.

Length	210 aa
Molecular Weight	23.4 kDa
Source	E. coli
Accession Number	Q14213
Purity	≥90% determined by reducing and non-reducing SDS-PAGE

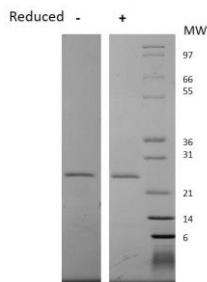
Specifications

Alternative Names	IL-35/EBI-3, IL-27/EBI-3, interleukin-27, interleukin 27, IL27, IL 27, EBI-3 subunit, epstein-barr virus induced gene-3
Biological Activity	Activity to be determined.
Endotoxin Level	≤5.00 EU/μg as measured by kinetic LAL
Formulation	Lyophilized from a sterile (0.2 micron) filtered aqueous solution containing 0.1% Trifluoroacetic Acid (TFA) and mannitol (2:1 mannitol to protein ratio)
AA Sequence	MRKGPPAALT LPRVQCRASR YPIAVDCSWT LPPAPNSTSP VSFIATYRLG MAARGHSWPC LQQTPTSTSC TITDVQLFSM APYVLNVTAV HPWGSSSSFV PFITEHIKPK DPPEGVRLSP LAERQLQVQW EPPGSWPFPE IFSLKYWIRY KRQGAARFHR VGPIEATSFI LRAVRPRARY YVQVAAQDLT DYGELSDWSL PATATMSLGK

Preparation and Storage

Reconstitution	Centrifuge vial before opening. When reconstituting the product, gently pipet and wash down the sides of the vial to ensure full recovery of the protein into solution. It is recommended to reconstitute the lyophilized product with sterile 20 mM HCl at 0.1 mg/ml, which can be further diluted into other aqueous solutions.
Stability and Storage	12 months from date of receipt when stored at -20°C to -80°C as supplied. 1 month when stored at 4°C after reconstituting as directed. 3 months when stored at -20°C to -80°C after reconstituting as directed.

Data



Non-reducing (-) and reducing (+) conditions in a 4 - 20% Tris-Glycine gel stained with Coomassie Blue. 1 μg of protein was loaded in each lane.
Human IL-27 / EBI-3 has a predicted Mw of 23.4 kDa.