

GFH49 Recombinant Human IL-35

Description

Interleukin-35 (IL-35) is a member of the IL-12 cytokine family and is produced by regulatory T cells (Tregs). IL-35 is a heterodimeric cytokine that is comprised of the interleukin-12 subunit P35 (IL-12 α) and the interleukin-27 subunit β (IL-27 β) chains. IL-35 binds the IL-12R β 2/gp130 hetero- and homodimers to activate STAT1 and STAT4 signaling. IL-35 functions as a suppressor of immune cell inflammatory responses.

Length	406 aa
Molecular Weight	45.8 / 60-65 unreduced, 70-80 reduced kDa
Source	HEK 293 cells
Accession Number	Q14213/P29459
Purity	\geq 95% determined by reducing and non-reducing SDS-PAGE

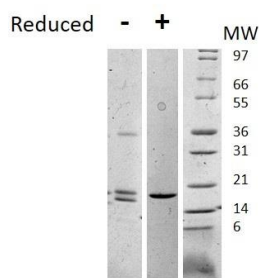
Specifications

Alternative Names	Interleukin-35, interleukin 35, IL35, IL 35
Biological Activity	There is no biological assay data available but protein content is validated by western blot.
Endotoxin Level	\leq 5.00 EU/ μ g as measured by kinetic LAL
Formulation	Lyophilized from a sterile (0.2 micron) filtered aqueous solution containing 10 mM sodium phosphate, 30 mM sodium chloride, pH 7.5
AA Sequence	EBI-3: RKGPPAALTL PRVQCASRY PIAVDCSWTL PPAPNSTSPV SFIATYRLGM AARGHSWPCL QQTPTSTSTCT ITDVQLFSMA PYVLNVTAVH PWGSSSSFVP FITEHIIKPD PPEGVRLSPL AERQLQVQWE PPGSWPFPEI FSLKYWIRYK RQGAARFHRV GPIEATSFIL RAVRPRARYY VQVAAQDLTD YGELSDWSLP ATATMSLGK p35: RNLPVATPDF G

Preparation and Storage

Reconstitution	Centrifuge vial before opening. When reconstituting the product, gently pipet and wash down the sides of the vial to ensure full recovery of the protein into solution. It is recommended to reconstitute the lyophilized product with sterile water at 0.1 mg/ml, which can be further diluted into other aqueous solutions.
Stability and Storage	12 months from date of receipt when stored at -20°C to -80°C as supplied. 1 month when stored at 4°C after reconstituting as directed. 3 months when stored at -20°C to -80°C after reconstituting as directed.

Data



Non-reducing (-) and reducing (+) conditions in a 4 - 20% Tris-Glycine gel stained with Coomassie Blue. 1 μ g of protein was loaded in each lane. Single chain, HIS-tagged Human IL-35 has a predicted Mw of 49 kDa, but shows approximately 75 - 95 kDa under reduced and approximately 65 - 75 kDa under non-reduced conditions.