

## GFM77 Recombinant Mouse IL-22

### Description

Interleukin-22 (IL-22) is an IL-10 family member that is produced by activated dendritic cells and T lymphocytes. IL-22 signals via a heteroduplex receptor consisting of IL-22R and IL-10R $\beta$  chains. IL-22 is a potent mediator of cellular inflammatory responses.

<b>Length</b>	147 aa
<b>Molecular Weight</b>	16.8 kDa
<b>Source</b>	E. coli
<b>Accession Number</b>	Q9JJY9
<b>Purity</b>	$\geq$ 95% determined by reducing and non-reducing SDS-PAGE

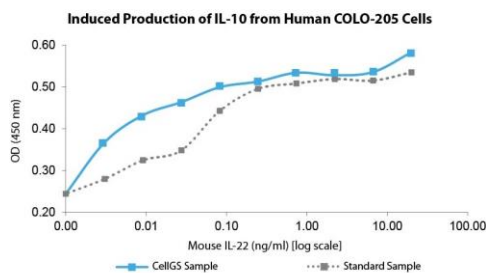
### Specifications

<b>Alternative Names</b>	Interleukin-22, interleukin 22, IL22, IL 22, IL-TIF
<b>Biological Activity</b>	Mouse IL-22 is fully biologically active when compared to standard. The activity is determined by the ability to induce production of IL-10 from human COLO-205 cells and it is typically less than 1 ng/ml. This corresponds to an expected specific activity of $1 \times 10^6$ units/mg.
<b>Endotoxin Level</b>	$\leq$ 1.00 EU/ $\mu$ g as measured by kinetic LAL
<b>Formulation</b>	Lyophilized from a sterile (0.2 micron) filtered aqueous solution containing 0.1% Trifluoroacetic Acid (TFA)
<b>AA Sequence</b>	MLPVNTRCKL EVSNFQQPYI VNRTFMLAKE ASLADNNTDV RLIGEKLFGRG VSAKDQCYLEM KQVLNFTLED VLLPQSDRFQ PYMQEVVFFL TKLSNQLSSC HISGDDQNIQ KNVRLKQTV KKLGESGEIK AIGELDLLFM SLRNACV

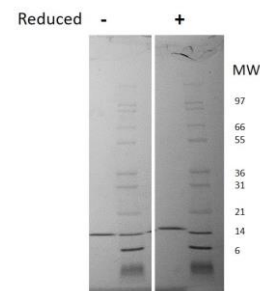
### Preparation and Storage

<b>Reconstitution</b>	Centrifuge vial before opening. When reconstituting the product, gently pipet and wash down the sides of the vial to ensure full recovery of the protein into solution. It is recommended to reconstitute the lyophilized product with sterile water at 0.1 mg/ml, which can be further diluted into other aqueous solutions.
<b>Stability and Storage</b>	12 months from date of receipt when stored at -20°C to -80°C as supplied. 1 month when stored at 4°C after reconstituting as directed. 3 months when stored at -20°C to -80°C after reconstituting as directed.

### Data



Induced production of IL-10 by human COLO-205 cells. Production of IL-10 was measured to calculate the ED50, which is as expected less than 1 ng/ml.



Non-reducing (-) and reducing (+) conditions in a 4 - 20% Tris-Glycine gel stained with Coomassie Blue. 1  $\mu$ g of protein was loaded in each lane. Mouse IL-22 has a predicted Mw of 16.8 kDa.