

GFR38 Recombinant Rat IL-2

Description

Interleukin-2 (IL-2) is an immunomodulatory cytokine that is produced by lymphocytes. IL-2 signals through the IL-2R receptor to induce activated T cell proliferation and promote T cell differentiation. IL-2 also stimulates the proliferation and differentiation of B cells, Natural Killer cells, monocytes, and macrophages.

Length	136 aa
Molecular Weight	15.6 kDa
Source	E. coli
Accession Number	P17108
Purity	≥95% determined by reducing and non-reducing SDS-PAGE

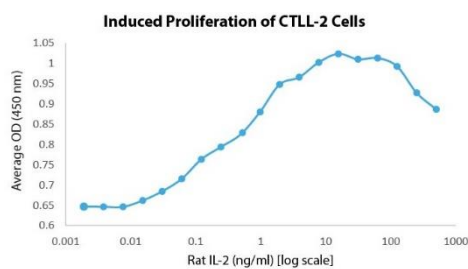
Specifications

Alternative Names	Interleukin-2, interleukin 2, IL2, IL 2, T cell growth factor, TCGF, Aldesleukin
Biological Activity	Rat IL-2 is fully biologically active when compared to standard. The activity is determined by the ability to induce CTLL-2 cells proliferation and it is typically less than 5 ng/ml.
Endotoxin Level	≤1.00 EU/μg as measured by kinetic LAL
Formulation	Lyophilized from a sterile (0.2 micron) filtered aqueous solution containing 0.1% Trifluoroacetic Acid (TFA)
AA Sequence	MAPTSSPAKE TQQHLEQLLL DLQVLLRGID NYKNLKLPM LTFKFYLPKQ ATELKHLQCL ENELGALQRV LDLTQSKSFH LEDAGNFISN IRVTVVKLKG SENKFECQFD DEPATVVEFL RRWIAICQSI ISTMTQ

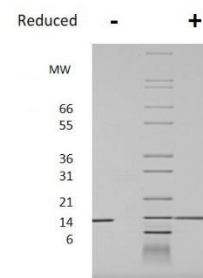
Preparation and Storage

Reconstitution	Centrifuge vial before opening. When reconstituting the product, gently pipet and wash down the sides of the vial to ensure full recovery of the protein into solution. It is recommended to reconstitute the lyophilized product with sterile 10 mM HCl at 0.1 mg/ml, which can be further diluted into other aqueous solutions.
Stability and Storage	12 months from date of receipt when stored at -20°C to -80°C as supplied. 1 month when stored at 4°C after reconstituting as directed. 3 months when stored at -20°C to -80°C after reconstituting as directed.

Data



Induced proliferation of CTLL-2 cells for Rat IL-2. Cell proliferation was measured to calculate the ED50, which is as expected less than 5 ng/ml.



Non-reducing (-) and reducing (+) conditions in a 4 - 20% Tris-Glycine gel stained with Coomassie Blue. 1 μg of protein was loaded in each lane. Rat IL-2 has a predicted Mw of 15.6 kDa.